



Royal Meadow Drive

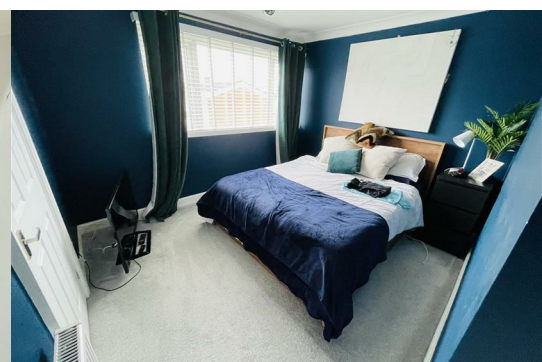
, Atherstone, CV9 3BN

£950 PCM



Pointons Estate Agents are delighted to offer to let this well presented mid terrace property in Atherstone. Benefiting from gas central heating and double glazing, the accommodation comprises entrance porch, hall, fitted kitchen with integrated fridge and freezer, lounge with built in log burner.

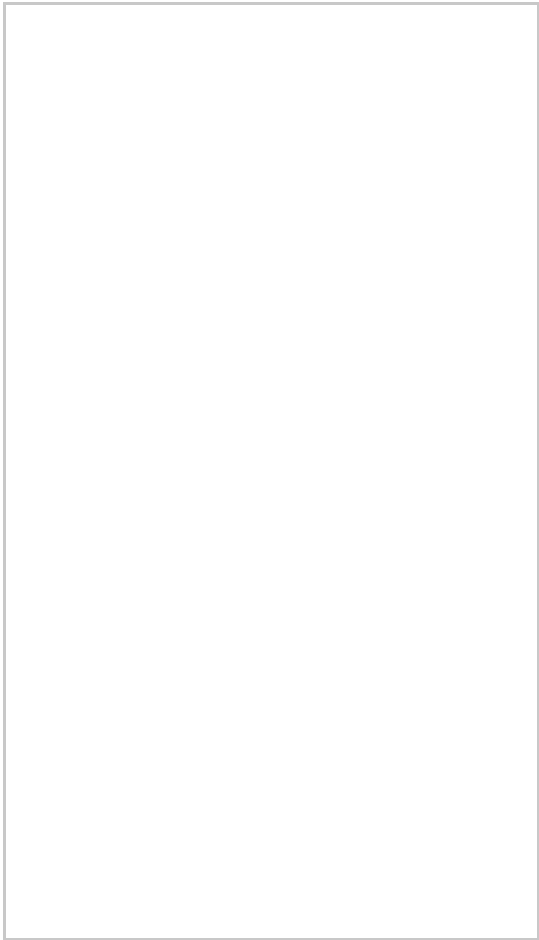
To the first floor there are three double bedrooms all with built in wardrobes, and fitted bathroom with shower over the bath and separate W.C., Outside to the rear is an easy maintenance enclosed garden, two sheds and a foregarden to the front. The landlord insist on NO SMOKERS or PETS. Bond £1016, EPC D & COUNCIL TAX is band A. Viewing is by prior appointment. This property is available after June 1st 2024.



Area Map

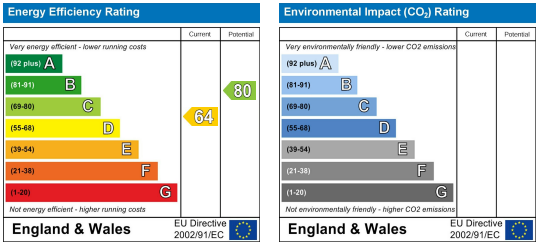


Floor Plans



Energy Efficiency Graph

These particulars, whilst believed to be accurate are set out as a general outline only for guidance and do not constitute any part of an offer or contract. Intending purchasers should not rely on them as statements of representation of fact, but must satisfy themselves by inspection or otherwise as to their accuracy. No person in this firms employment has the authority to make or give any representation or warranty in respect of the property.



109 NEW UNION STREET
COVENTRY, CV1 2NT
coventry@pointons-group.com
024 7710 333
Company No: 7359350



BOND GATE CHAMBERS
NUNEATON, CV11 4AL
nuneaton@pointons-group.com
024 7637 3300
Company No: 6743033

74 LONG STREET
ATHERSTONE, CV9 1AU
atherstone@pointons-group.com
01827 711911
Company No: 81323250

www.pointons-group.com

VAT NO 742186125